

CM Learning network[®]

A Resource Center for Today's Case Manager

Health Equity: Access-to-care data helps us understand racial and ethnic disparities



Jesse Baumgartner, M.P.H.
Research Associate
Commonwealth Fund



MaryBeth Kurland, MPA, CAE, ICE-CCP
Chief Executive Officer
Commission for Case Manager Certification

Agenda

■ Welcome and Introductions:

- **Nancy Freeborne, DrPH, MPH, PA-C**
Senior Advisor for Educational Programming
Health2 Resources
- **MaryBeth Kurland, MPA, CAE, ICE-CCP**
Chief Executive Officer
Commission for Case Manager Certification

■ Presentation:

- **Jesse Baumgartner, M.P.H.**
Research Associate
Health Care Coverage and Access & Tracking Health System Performance
program at the Commonwealth Fund

CM Learning network[®]

A Resource Center for Today's Case Manager

Learning Outcomes

After this presentation, the successful participant will be able to:

1. *Discuss the 2021 Racial and Ethnic Health Equity State Scorecard report.*
2. *Describe how lack of health equity might influence case management.*
3. *Explain the ethical arguments for decreasing health disparities and improving health equity.*
4. *Define and describe structural inequities in communities that influence health outcomes.*

Exam Prep Resources



Quiz App



Practice Exam



Glossary App



Certification 360
Virtual Workshops



Printable
Glossary



Exam Prep
References



8-Week
Prep Circuit

CM Learning network[®]

A Resource Center for Today's Case Manager

If you're watching this webinar and do NOT need CE credit, please take a moment to complete our survey found here:

bit.ly/CCMCWebinarJesse (case sensitive)

Your feedback helps us provide speakers and topics most relevant to you and the important work you do!



CM Learning network®

A Resource Center for Today's Case Manager

The screenshot shows the website's navigation bar with the following items: LOG IN, FIND A CCM, CCM VERIFICATION, JOBS, FOUNDATION, MEDIA, CONTACT. Below this is the CCMC logo (Commission for Case Manager Certification) and a search bar. The main navigation menu includes: About CCMC, Get Certified, Stay Certified, Develop Others, and Workforce Development. The 'Workforce Development' menu is open, listing the following items: CMLearning Network, CMLearning Network at a Glance, Free Webinars, 2020 Compendium, Case Management Body of Knowledge (CMBOK), Career Center, PACE™ (Pre-Approved Continuing Education) Directory, PACE™ Guide for Providers, Care Management Journal (ACCM), Workshops, WorkForce Development Toolkit, Workforce Development Assessment, 2017 Compendium, and Issue Briefs. The main content area features a video player with the title 'Push Pause' and the text 'Push Pause. Simple words...not so simple to do. Even in times of crisis, taking a moment for yourself is crucial.' A 'WATCH NOW' button is visible. The footer contains logos for CMLearning network, CCMC, PACE, Virtual Symposium, and Case Management Body of Knowledge.



A Resource Center for Today's Case Manager

Health Equity: Access-to-care data helps us understand racial and ethnic disparities



MaryBeth Kurland, MPA, CAE, ICE-CCP
Chief Executive Officer
Commission for Case Manager Certification

CM Learning network®

A Resource Center for Today's Case Manager



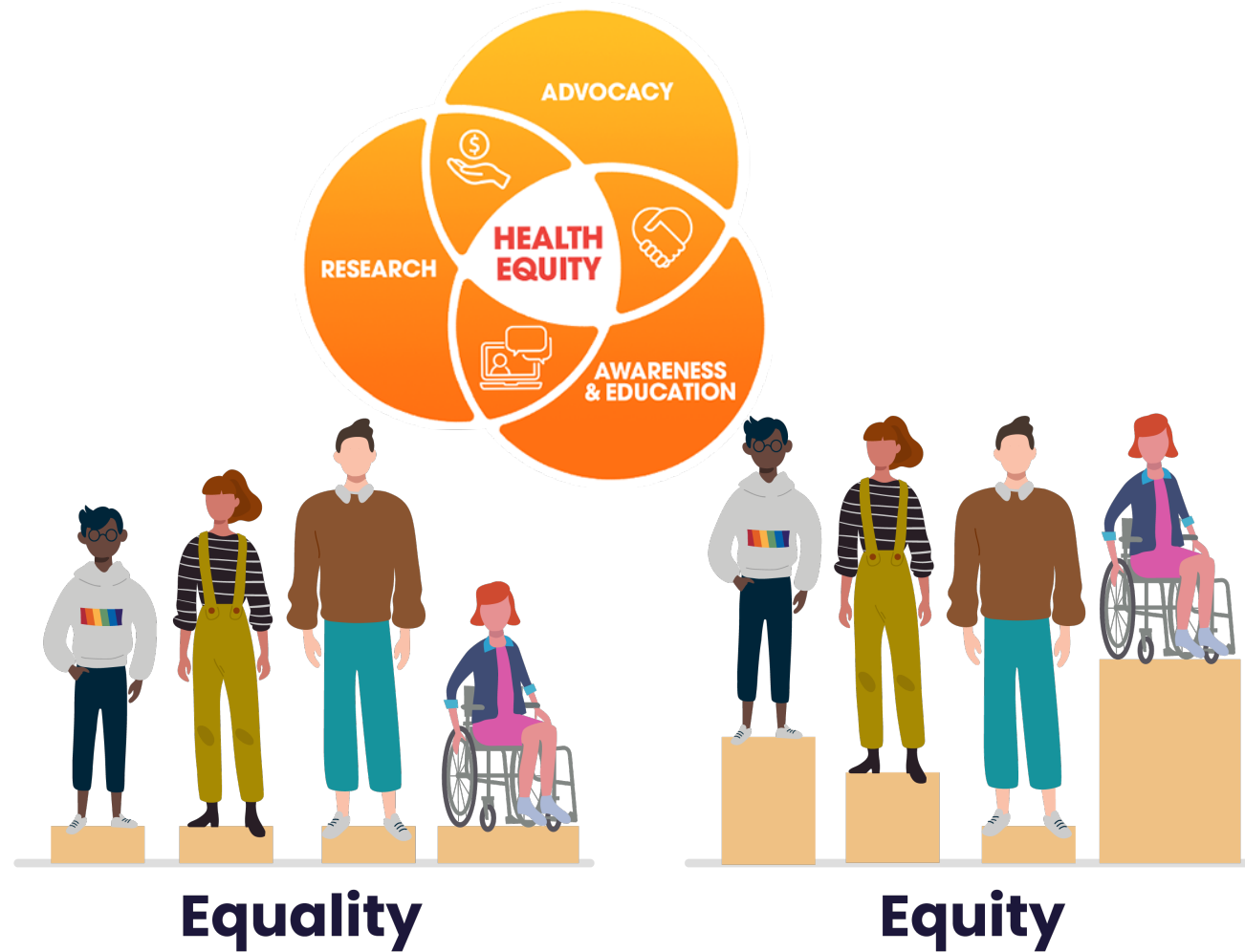
PACE™



Health Equity: Access-to-care data helps us understand racial and ethnic disparities



Health Equity: Access-to-care data helps us understand racial and ethnic disparities



CM Learning network[®]

A Resource Center for Today's Case Manager

Health Equity: Access-to-care data helps us understand racial and ethnic disparities



Jesse Baumgartner, M.P.H.
Research Associate
Commonwealth Fund

Thank you!

Commission for Case Manager Certification

1120 Route 73, Suite 200, Mount Laurel, NJ 08054

1-856-380-6836 • Email: ccmchq@ccmcertification.org

www.ccmcertification.org



Tune in to Push Pause

Available on YouTube

CM Learning network[®]

A Resource Center for Today's Case Manager

