

# CM Learning network<sup>®</sup>

A Resource Center for Today's Case Manager

## Ethics and medical marijuana: What you need to know

---



**Patricia Carothers,  
BSN, RN, MS, CCM  
President  
My Net RN, Inc.**



**Jared Young,  
Psy.D., CAC, LCSW, CCM  
Chair-Elect, Commission for  
Case Manger Certification**



**Vivian Campagna,  
MSN, RN-BC, CCM  
Chief Industry Relations  
Officer, Commission for  
Case Manager  
Certification**



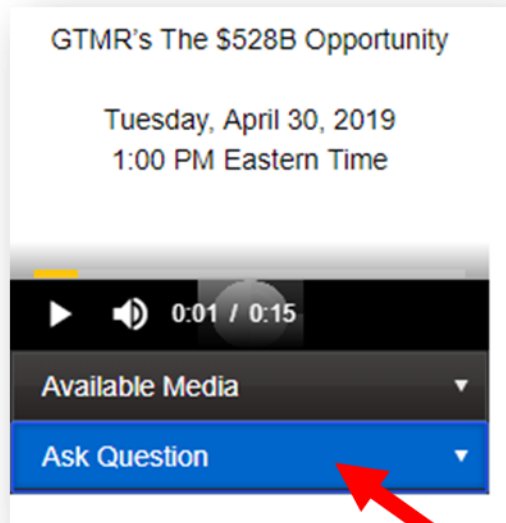
A Resource Center for Today's Case Manager

## Audience Notes

---

There is no call-in number for today's event. Audio is by streaming only. Please use your computer speakers, or you may prefer to use headphones. There is a troubleshooting guide in the tab to the left of your screen. Please refresh your screen if slides don't appear to advance.





Click here

## How to submit a question

To submit a question, click on Ask Question to display the Ask Question box. Type your question in the Ask Question box and submit. We will answer as many questions as time permits.



A Resource Center for Today's Case Manager

## Audience Notes

---

- A recording of today's session will be posted within one week to the Commission's website, [www.ccmcertification.org](http://www.ccmcertification.org)
- One CCM continuing education credit for board-certified case managers (CCM) and one ANCC nursing contact hour is available for today's webinar only to those who registered in advance and are participating today.



## Learning Outcomes Overview

---

*After the webinar, participants will be able to:*

- Identify key legal, regulatory and coverage issues that impact patient access to using medical marijuana in its various formulations;
- Describe ethically appropriate responses to common scenarios where patients and/or families have expressed interest in using medical marijuana as part of their treatment plan; and
- Develop an approach to anticipate and address common barriers to treatment, including incorporating advocacy on behalf of clients and their treatment preferences in interaction with providers, payers and caregivers.

# CM Learning network®

A Resource Center for Today's Case Manager

---



**Jared Young, Psy.D., CAC, LCSW, CCM  
Chair-Elect  
Commission for Case Manager Certification**



A Resource Center for Today's Case Manager

# Agenda

---

- Welcome and Introductions:
  - **Jared Young, Psy.D., CAC, LCSW, CCM**  
Chair-Elect, Commission for Case Manger Certification
  
- Presentation:
  - **Patricia Carothers, BSN, RN, MS, CCM**  
President, My Net RN, Inc.
  
- Question and Answer Session



# CM Learning network<sup>®</sup>

A Resource Center for Today's Case Manager



## PACE<sup>™</sup>



*CareManagement*







A Resource Center for Today's Case Manager

# Ethics and medical marijuana: What you need to know

---



**Patricia Carothers, BSN, RN, MS, CCM**  
**President**  
**My Net RN, Inc.**

# ETHICS AND MEDICAL MARIJUANA

WHAT YOU NEED TO  
KNOW

Patricia S. Carothers BSN RN MS  
CCM

# CONTENTS

- History Legal and Medical
- Medical uses
- Plant Medicine
- Endocannabinoid System
- Cannabis Education
- Ethical Pause Points
- Society and culture
- Research

# CANNABIS THROUGH THE AGES

A medical journey



---

# MEDICAL HISTORY

Emperor Fu Hsi

2900

70 AD

Materia Medica





# UNITED KINGDOM AND UNITED STATES

---



# 1906 PURE FOOD AND DRUG ACT

---

- Consumer Protection Laws



# ELI LILLY AND PARKE DAVIS

---

One-Fourth Ounce Solid Extract <b>CANNABIS AMERICANA</b> (Cannabis sativa—American grown) PHYSIOLOGICALLY TESTED DOSE—1-5 to 1 grain	ELI LILLY & CO. INDIANAPOLIS U. S. A.
--	---

ONE-FOURTH POUND—SOLID EXTRACT <b>CANNABIS AMERICANA</b> PHYSIOLOGICALLY TESTED (Cannabis sativa—American Grown) Analgesic, Hypnotic, Antispasmodic and powerful Narcotic DOSE—1-5 to 1 grain
--

OCT 11 1913 *Lilly*

ELI LILLY & CO., INDIANAPOLIS U. S. A.  
Manufactured by Eli Lilly & Co., under Patent and  
Drugs Act, June 20, 1906—Quantity No. 57

	<b>FLUID EXTRACT</b> <b>Cannabis Americana</b>
---	---

**AS ACTIVE AS INDIAN CANNABIS**

We are marketing a reliable fluid extract of Cannabis Sativa from American-grown drug. It has been thoroughly tested by experienced clinicians and governmentally equal to the fluid extract obtained from the best Indian Cannabis.

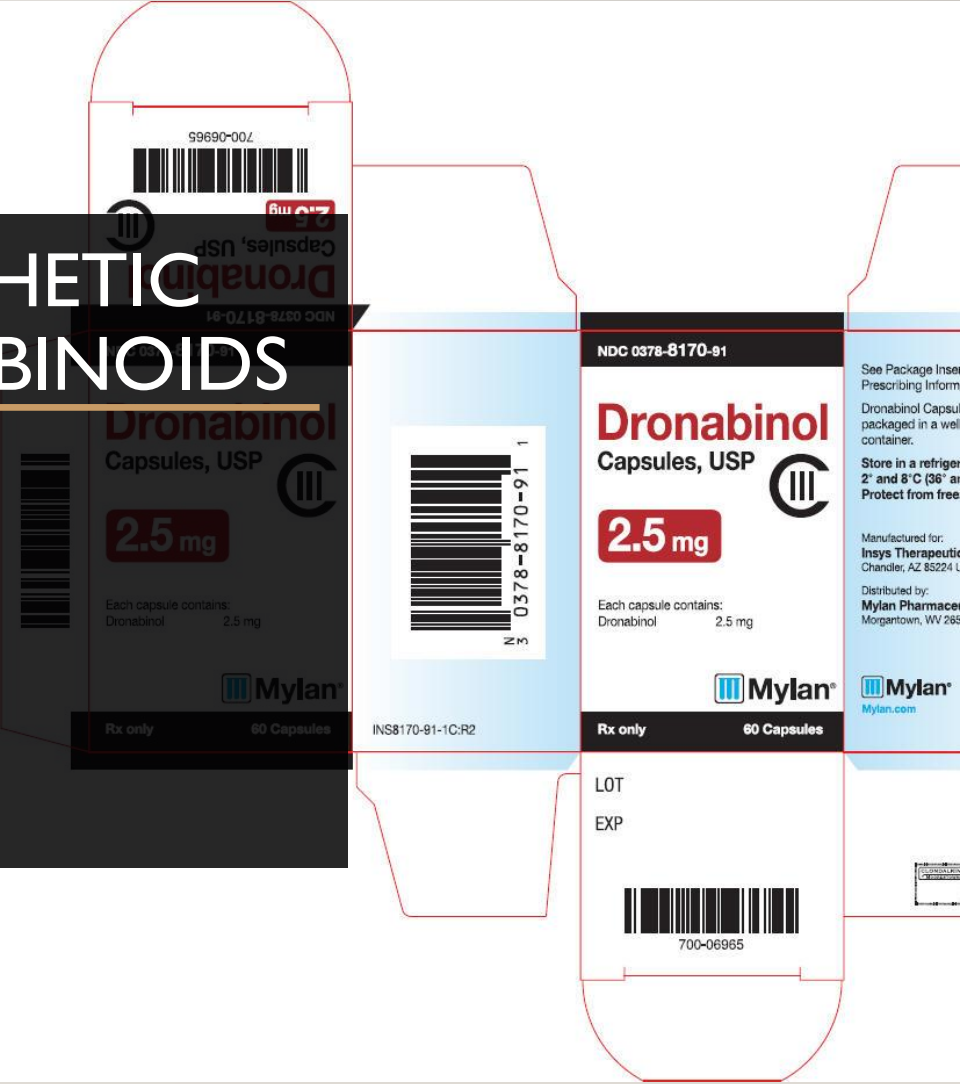
Fluid Extract Cannabis Americana (P. D. & Co.) is physiologically standardized. Practitioners may specify it with perfect assurance of its purity and uniformity. We market it at a price considerably lower than that asked for fluid extract Cannabis Indiae.

*Standard in India, Siam and Siamboha.*

**PARKE, DAVIS & COMPANY**  
HOME OFFICE AND LABORATORIES, DETROIT, MICH.



# SYNTHETIC CANNABINOIDS



# COLORADO – ACCEPTED CONDITIONS FOR MEDICAL CANNABIS

---

- HIV/AIDS
- Cancer
- Glaucoma
- Cachexia, Anorexia or Wasting Syndrome
- Severe or Chronic Pain or Nausea
- Seizure Disorders
- Skeletal Disorders

# ETHICAL PAUSE POINT

CHARLOTTE FIGI –  
STARTING A  
MOVEMENT



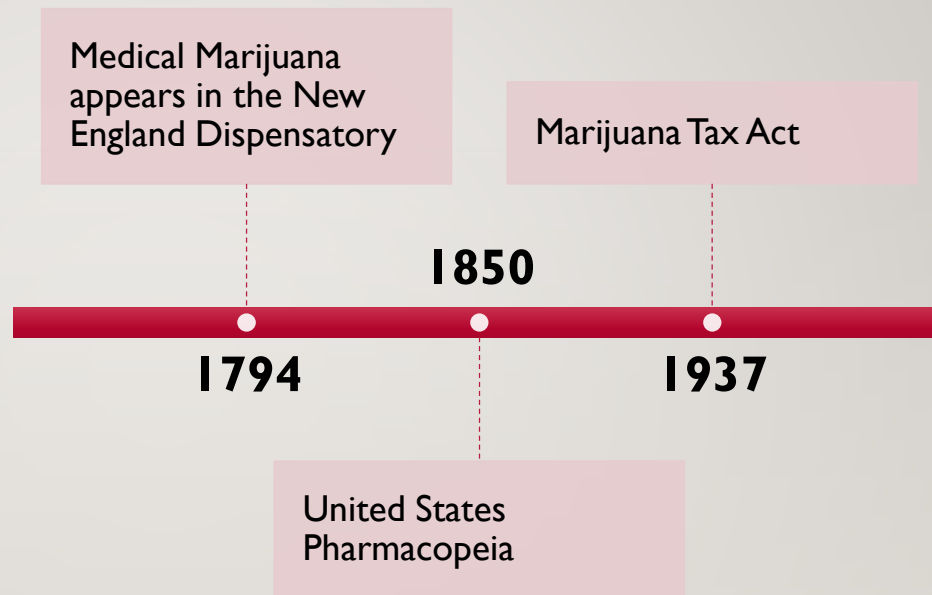
# CANNABIS THROUGH THE AGES

An historical journey



---

# LEGAL HISTORY



# 1937 MARIJUANA TAX ACT

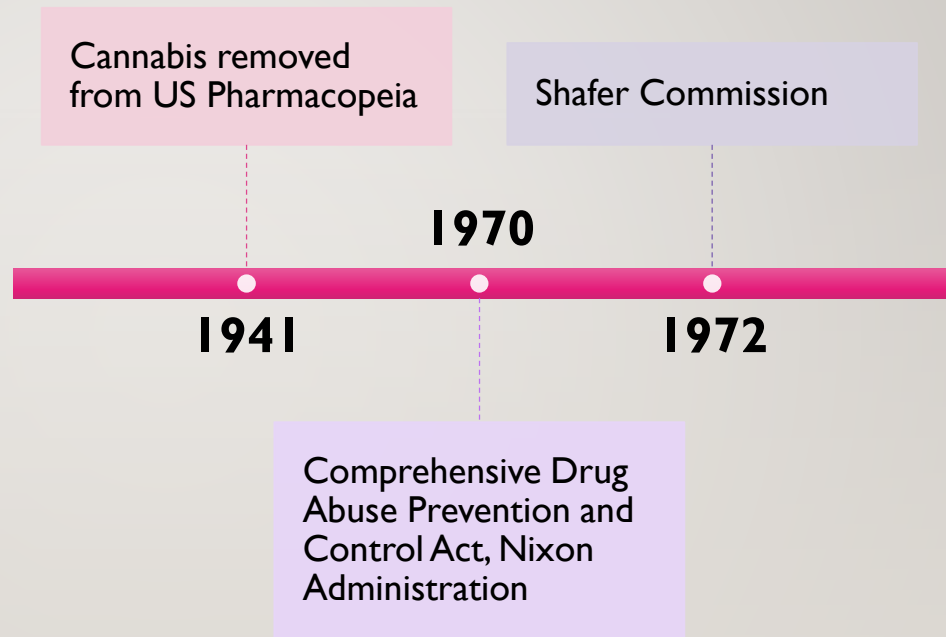
---

Henry J Aslinger – Federal Bureau  
of Narcotics



---

# HISTORY



# SCHEDULE I

---

- No mainstream use
- High potential for abuse
- Includes heroin, peyote, ecstasy and LSD

Table 1. Control Status of the substances under the international control of the UN-CND. Sourced from the UNODC publications: Multilingual Dictionary of Narcotic Drugs and Psychotropic Substances under International Control 2006.

Schedule	Harmfulness	Degree of control	Examples of listed drugs
I	Substances presenting a high risk of abuse, posing a particularly serious threat to public health, which are of very little or no therapeutic value	Very strict; use is prohibited except for scientific or limited medical purposes	Cocaine/coca leaf, MDMA (ecstasy), morphine, oxycodone
II	Substances presenting a risk of abuse, posing a serious threat to public health, which are of low or moderate therapeutic value	Less strict	Codeine, methamphetamine
III	Substances presenting a risk of abuse, posing a serious threat to public health, which are of moderate or high therapeutic value	These substances are available for medical purposes	Codeine preparations, cocaine preparations, morphine preparations
IV	Substances presenting a risk of abuse, posing a minor threat to public health, with a high therapeutic value	These substances are available for medical purposes	Alprazolam, diazepam, midazolam, zolpidem



---

# HISTORY

DEA Hearings

1986–1988

1994 & 2011

Upheld Schedule I



# ROBERT RANDALL

---

- Compassionate Access Program
- 1976



# ETHICAL PAUSE POINT



LAUREN K – TAKING  
CONTROL

# THE PLANT - AS MEDICINE?

---



# MEDICINAL USES

---

- 2019



me·dic·i·nal

/məˈdɪsənəl/

[Learn to pronounce](#)

*adjective*

1. (of a substance or plant) having healing properties.  
"medicinal herbs"

• *noun*

1. a medicinal substance.

# CANNABIS

---



SATIVA, INDICA,  
RUDERALIS



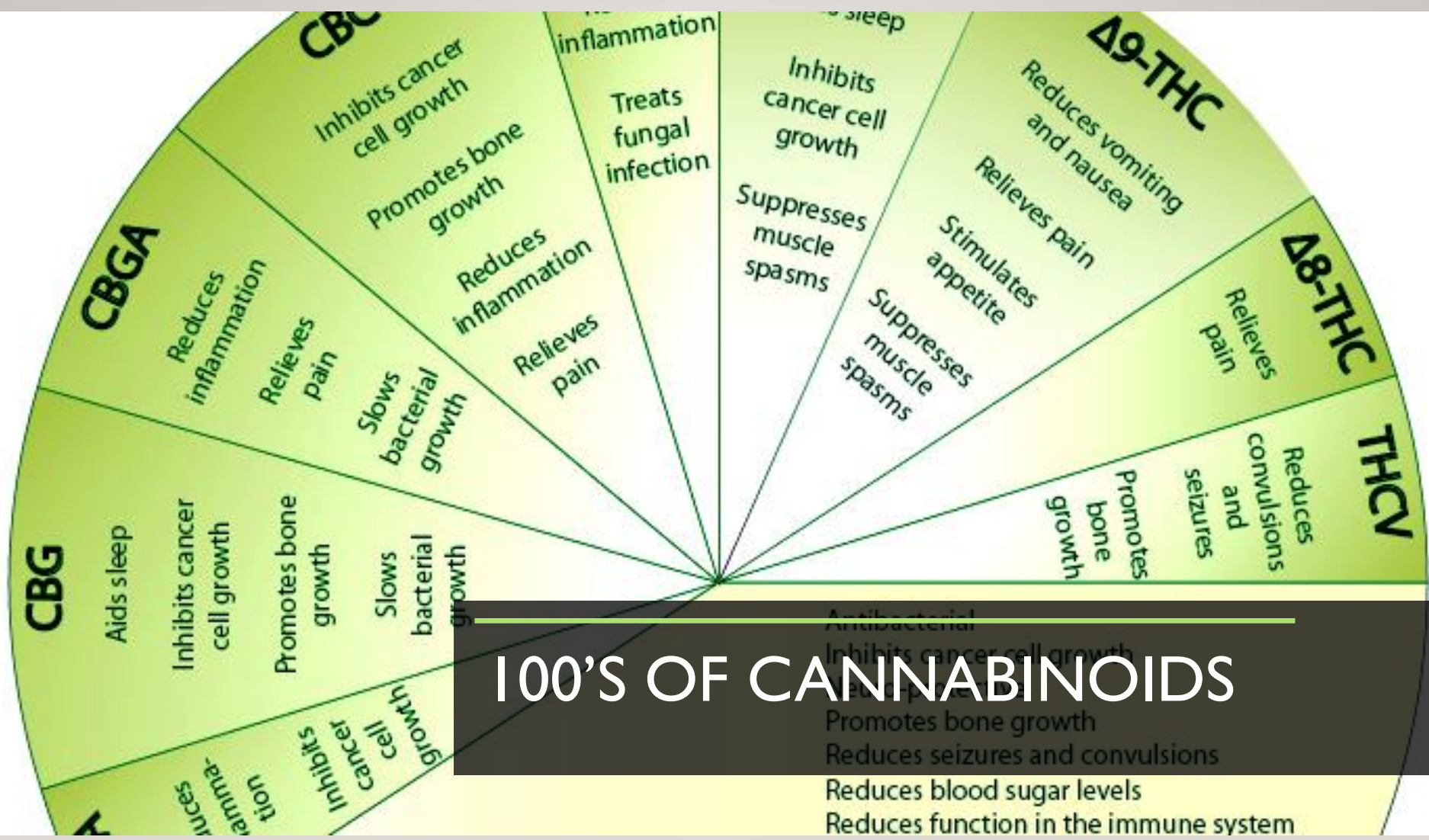
FLOWERS, BUDS,  
TRICHOMES



TERPENES,  
FLAVONOIDS



CANNABINOIDS  
– CBD AND THC

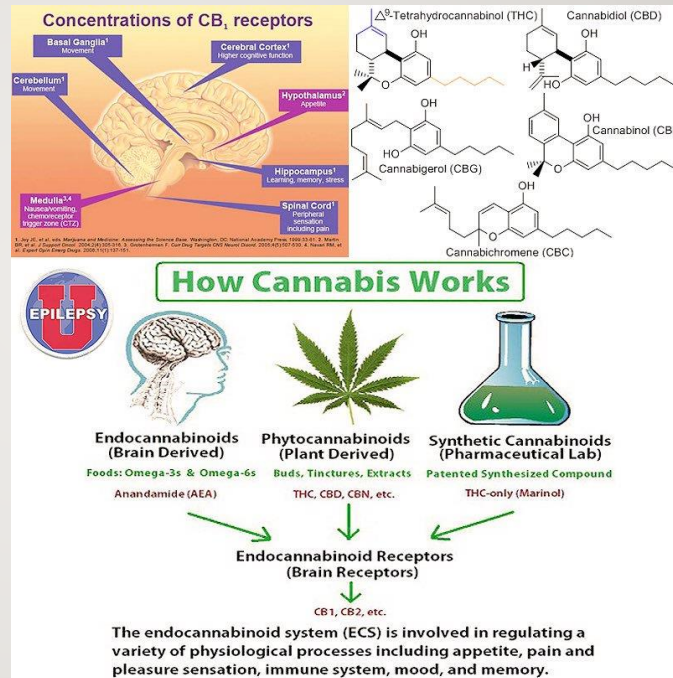


# 100'S OF CANNABINOIDS

Antibacterial  
 Inhibits cancer cell growth  
 Promotes bone growth  
 Reduces seizures and convulsions  
 Reduces blood sugar levels  
 Reduces function in the immune system



# ECS – RELAX, EAT, SLEEP, FORGET, AND PROTECT





# ETHICAL PAUSE POINT



DR. DEDI MEIRI -  
STANDARDIZATION

# MEDICAL RESEARCH

---

- International Association of Cannabinoid Medicines
- Clinical studies and case reports with cannabis or single cannabinoids
- Diagnoses include: Anxiety, Pain, Cancer, Epilepsy, GI Disorders, PTSD, etc
- Examples: “Vaporisation may be more effective than smoking cannabis”, “Cannabis may have negative effects on cancer therapy if given together with immunotherapy”, “Cannabis may reduce complications of Crohn’s disease”

# MEDICAL RESEARCH

---

- Lack of Clinical Trials
- FDA approval of Epidiolex, Dronabinol, Nabilone
- The American Academy of Neurology

# INFORMED ADVISOR

---

- Medical Cannabis Recommendations
- Physician to Application to Approval



# INFORMED ADVISOR

---

- APPROVAL TO DISPENSARY
- DISPENSARY TO HOME



# MEDICAL CANNABIS USE

- INGESTING
- INHALATION
- APPLICATION

# SYSTEMIC AFFECTS REVIEWED

---



Nervous System



Pulmonary



Cardiac

# ETHICAL PAUSE POINT



JACK W. —  
CANNABIS USE IN  
THE WORKPLACE



# EDUCATION AND ADVOCACY

---



---

THANK  
YOU!



Contact Information:



Patricia S. Carothers BSN RN MS CCM



[Patricia@mynetrn.com](mailto:Patricia@mynetrn.com)



303-847-9569



[Mynetrn.com/medicalcannabis](https://mynetrn.com/medicalcannabis)

---

# WORKS CITED

---



- 
- *Clinical Studies and Case Reports*, [www.cannabis-med.org/studies/study.php](http://www.cannabis-med.org/studies/study.php).
  - “Comprehensive Drug Abuse Prevention and Control Act of 1970.” *Findlaw*, [criminal.findlaw.com/criminal-charges/comprehensive-drug-abuse-prevention-and-control-act-of-1970.html](http://criminal.findlaw.com/criminal-charges/comprehensive-drug-abuse-prevention-and-control-act-of-1970.html).
  - Dolan, Darrach. “Medical Marijuana.” *Neurology Now*, vol. 10, no. 3, 2014, pp. 49–51., doi:10.1097/01.nnn.0000451330.13410.54.
  - “Effects of Cannabis and Cannabinoids in the Human Nervous System.” *ScienceDirect*, Academic Press, 10 Jan. 2014, [www.sciencedirect.com/science/article/pii/B9780124186798000137](http://www.sciencedirect.com/science/article/pii/B9780124186798000137).
  - Hayry, M. “Prescribing Cannabis: Freedom, Autonomy, and Values.” *Journal of Medical Ethics*, Institute of Medical Ethics, 1 Aug. 2004, [jme.bmj.com/content/30/4/333](http://jme.bmj.com/content/30/4/333).
  - “Medical Marijuana.” *American Academy of Neurology*, [www.aan.com/policy-and-guidelines/policy/position-statements/medical-marijuana/](http://www.aan.com/policy-and-guidelines/policy/position-statements/medical-marijuana/).
  - “Medical Marijuana: Turning Over a New Leaf in Glaucoma Treatment?” *Pharmacy Times*, [www.pharmacytimes.com/publications/issue/2010/may2010/medmarijuanaglaucoma-0510](http://www.pharmacytimes.com/publications/issue/2010/may2010/medmarijuanaglaucoma-0510).
  - “MedicalCannabis.com.” *MedicalCannabis.com*, [www.medicalcannabis.com/patients-care-givers/federal-ind-patients/](http://www.medicalcannabis.com/patients-care-givers/federal-ind-patients/).
  - “National Safety Council Membership.” *Marijuana at Work*, [www.nsc.org/membership/training-tools/best-practices/marijuana-at-work](http://www.nsc.org/membership/training-tools/best-practices/marijuana-at-work).
  - Pertwee, Roger G. “Targeting the Endocannabinoid System with Cannabinoid Receptor Agonists: Pharmacological Strategies and Therapeutic Possibilities.” *Philosophical Transactions of the Royal Society B: Biological Sciences*, vol. 367, no. 1607, 2012, pp. 3353–3363., doi:10.1098/rstb.2011.0381.
  - “Qualifying Medical Conditions Medical Marijuana Registry.” *Department of Public Health and Environment*, 2 Aug. 2019, [www.colorado.gov/pacific/cdphe/qualifying-medical-conditions-medical-marijuana-registry](http://www.colorado.gov/pacific/cdphe/qualifying-medical-conditions-medical-marijuana-registry).
  - Sheth, Raj D. “Childhood Absence Epilepsy.” *Epilepsy Case Studies*, 2013, pp. 17–20., doi:10.1007/978-3-319-01366-4\_4.
  - Staff, Leafly. “Qualifying Conditions for Medical Marijuana by State.” *Leafly*, 13 Feb. 2019, [www.leafly.com/news/health/qualifying-conditions-for-medical-marijuana-by-state](http://www.leafly.com/news/health/qualifying-conditions-for-medical-marijuana-by-state).
  - “What Is the U.S. Pharmacopeia?: Quality Matters: U.S. Pharmacopeia Blog.” *Quality Matters | U.S. Pharmacopeia Blog*, [qualitymatters.usp.org/what-us-pharmacopeia](http://qualitymatters.usp.org/what-us-pharmacopeia).

# CM Learning network<sup>®</sup>

A Resource Center for Today's Case Manager

## Question and Answer Session

---



**Patricia Carothers,  
BSN, RN, MS, CCM  
President  
My Net RN, Inc.**



**Jared Young,  
Psy.D., CAC, LCSW, CCM  
Chair-Elect, Commission for  
Case Manager Certification**



**Vivian Campagna,  
MSN, RN-BC, CCM  
Chief Industry Relations  
Officer, Commission for  
Case Manager  
Certification**

# Thank you!

---

- Please fill out the survey after today's session
- Those who signed up for continuing education will receive an evaluation from the Commission.
- A recording of today's webinar and slides will be available in one week at <http://ccmcertification.org>

## Commission for Case Manager Certification

1120 Route 73, Suite 200, Mount Laurel, NJ 08054

1-856-380-6836 • Email: [ccmchq@ccmcertification.org](mailto:ccmchq@ccmcertification.org)

[www.ccmcertification.org](http://www.ccmcertification.org)

